

Chillicothe R-II School District Phase I Chillicothe, Missouri



Project Results

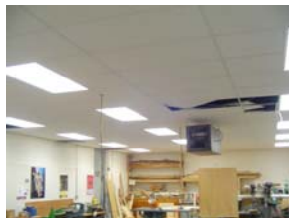


“The buildings were over fifty years old, very inefficient and non-ADA compliant. The financial conditions of the district had improved and it was our desire to improve the learning environment for our students. We had an annual amount of money we could outlay for these improvements and CTS worked to stay in that amount. We are very satisfied and pleased with the job done and all our goals were met. We now have a much improved learning environment. Advice I would offer to other districts facing needed improvements would be to team with a company such as CTS to benefit from their expertise. I would be glad to discuss with other schools the benefits that we gained from working with CTS.”

Dale Wallace, Superintendent

Customer Concerns

The Chillicothe School District faced problems which are common to so many districts; 50+ year old buildings in great need of updating to establish a safe and positive learning environment and reduce excessive energy expenditures. This situation, combined with limited available funds, left the District feeling that they would only be able to address their needs on a limited basis.



Project Overview

CTS was able to show the District how they could address many of their needs through a Performance Contract. The project included retrofits at 3 elementary schools, 1 middle school, a vocational/technical facility and an administration building.

- Complete lighting retrofit with energy efficient fixtures brings the lighting levels to current illumination standards.
- New drop ceilings have been installed in the elementary schools where none previously existed. The pads have a high moisture resistance and high reflectance qualities.
- New phone/intercom systems are now in place allowing for two-way communication between a classroom and the office. The base program allows for direct dial 911 emergency calls for classroom safety.
- Central Elementary 4 main restrooms have been renovated to current ADA standards. An ADA chair lift has also been installed at Central.
- Electrical upgrades were installed at the vocational building which included resolve of a grounding issue and extra power necessary to operate the welding shop.
- New temperature controls now increase energy savings within the district with automatic shutdown features and programming capabilities. This allows better control of the temperature for greater classroom comfort and improved energy efficiency.
- Automated lighting controls and occupancy sensors are in place for increased energy efficiency.
- **The audit of the first year energy savings revealed that \$73,590 in savings was obtained, 12.95% above the guaranteed amount.**